



FENCING

RAILING

OUTDOOR LIVING

weatherables
by USA Vinyl

SINCE 1992, OUR FAMILY-OWNED BUSINESS HAS BUILT OUR REPUTATION AROUND THE STRONGEST, MOST DURABLE PRODUCTS IN THE INDUSTRY, OUTSTANDING VALUE AND UNCOMPROMISING CUSTOMER SERVICE.

Our vinyl fencing and outdoor living products are proudly made in the USA with an exclusive, engineer-tested manufacturing process that uses the highest grade materials to yield enduring beauty, lasting stability and performance.

Our products are crafted to handle extremes in temperature and withstand high winds. Our fencing assembly system is pre-routed and notched, requiring no screws or brackets for easy installation and added stability. We stand behind everything we make, and we'll be here for you before, during and after your purchase with our Limited Non-Prorated Warranty for Vinyl and lifetime implementation support.

Fencing

Set it and forget it: Low maintenance, high impact vinyl fencing.

Select from a complete line of vinyl fencing, ranging from privacy, pool and picket fences to horse fences and railing systems, in a wide array of styles, sizes and colors. And, you'll find all of the accessories and additions you need to truly customize your vinyl fencing look and versatility. Made from 100% virgin vinyl with the most advanced materials available, our fencing is 20-50% stronger than the competition. It's impervious to water and humidity and offers the industry's best UV protection. It's virtually maintenance free and won't chip, rot or crack.

Products Available in White, Tan or Khaki

White

Tan

Khaki

Standard Bottom Rail Reinforcements



Aluminum "I" Channel



Aluminum "H" Channel

- Made in the USA
- Highest quality materials
- Resists water and humidity
- Won't chip, rot or crack
- 20-50% stronger/thicker than the competition
- Limited Non-Prorated Warranty
- Lifetime implementation support
- Lowest price guarantee
- A+ Better Business Bureau rating



Privacy Fencing

The perfect backdrop to lush garden plantings or lively backyard parties, our privacy fencing systems offer both seclusion and sophistication. Providing maximum privacy and minimal maintenance, our wide variety of styles and designs can complement virtually any architectural style, from Georgian to contemporary. All of our privacy fences 6' tall and below can be installed to withstand wind gusts of up to 130 mph. The bottom rail is reinforced with aluminum for added strength and durability.

Privacy made perfect with high performance and style.



The Savannah®

Height: 4', 5' & 6'
Picket Style: 7/8" x 6"
 Tongue & Groove .065"
Color: White, Tan, Khaki



The Ashton™

Height: 5', 6', 7' & 8'
Picket Style: 7/8" x 6"
 Tongue & Groove .065"
Color: White, Tan, Khaki



The Mason™

Height: 5', 6', 7' & 8'
Picket Style: 7/8" x 6"
 Tongue & Groove .065"
 (accents 7/8" x 1.5")
Color: White, Tan, Khaki



The Augusta™

Height: 6', 7' & 8'
Picket Style: 7/8" x 6"
 Tongue & Groove .065"
Color: White, Tan, Khaki



The Halifax™

Height: 5', 6' & 7'
Picket Style: 7/8" x 6"
 Tongue & Groove .065"
 (accents 7/8" x 1.5")
Color: White, Tan, Khaki



The Louisville™

Height: 5', 6' & 7'
Picket Style: 7/8" x 6"
 Tongue & Groove .065"
 (accents 7/8" x 1.5")
Color: White, Tan, Khaki



The Annapolis™

Height: 5', 6' & 7'
Picket Style: 7/8" x 6"
 Tongue & Groove .065"
 (accents 7/8" x 1.5")
Color: White, Tan



The Scottsdale™

Height: 5', 6' & 7'
Picket Style: 7/8" x 6"
 Tongue & Groove .065"
Color: White, Tan



Pool Fencing

Surround your patio, pool or lawn with one of our eye-catching fencing systems. These attractive designs add a sense of style to any landscape. While perfect around pools, our pool fencing also looks great in any area of your yard. Our vinyl finish features an exclusive manufacturing process that resists water, humidity and many chemicals. Our pool style gates include self-closing hinges and a lockable two-way latch. An optional pool safety latch — the Magna latch — is also available. The bottom rail is reinforced with aluminum for added strength and durability.

A beautiful finish that always looks new and resists water and humidity.



The Captiva™

Height: 4' & 5'(w/ Mid-Rail)
Picket Style: 7/8" x 3"
 (3.7" picket spacing)
Color: White, Tan, Khaki



The Crestview™

Height: 4' & 5'(w/ Mid-Rail)
Picket Style: 7/8" x 3"
 (1.7" picket spacing)
Color: White, Tan, Khaki



The Atlantis™

Height: 4' & 5'(w/ Mid-Rail)
Picket Style: 7/8" x 3" &
 7/8" x 1.5" alternating
 (3.7" picket spacing)
Color: White, Tan, Khaki



The Sarasota™

Height: 4' & 5'(w/ Mid-Rail)
Picket Style: 7/8" x 3" &
 7/8" x 1.5" alternating
 (1.7" picket spacing)
Color: White, Tan, Khaki



The Neptune™

Height: 4' & 5'(w/ Mid-Rail)
Picket Style: 7/8" x 1.5"
 (3.7" picket spacing)
Color: White, Tan, Khaki



The Williamsport™

Height: 4' & 5'(w/ Mid-Rail)
Picket Style: 7/8" x 1.5"
 (1.7" picket spacing)
Color: White, Tan, Khaki



The Hanover™

Height: 4' & 5'(w/ Mid-Rail)
Picket Style: 7/8" x 3"
 (0.6" picket spacing)
Color: White, Tan, Khaki



Semi-Privacy Fencing

Our semi-privacy fences offer just the right amount of seclusion for homeowners who want privacy without complete isolation. The pickets used in our semi-privacy fences slide through the routed rails for a true multi-dimensional look. The bottom rail is reinforced with aluminum for added strength and durability.

Just the right amount of seclusion and style.



The Huntington™

Height: 5' & 6'

Picket Style: 7/8" x 3"
(0.6" Picket Spacing)

Color: White, Tan, Khaki



The Davenport™

Height: 5' & 6'

Picket Style: 7/8" x 3"
& 7/8" x 1.5" alternating
(0.7" Picket Spacing)

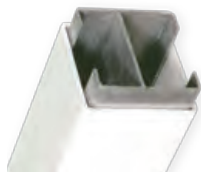
Color: White, Tan, Khaki



Gates

Blending optimal function and long-term performance.

You'll find matching gates for all of our fences that are designed and crafted with function and long-term performance in mind. We use the best gate hardware in the industry, made by D&D Technologies. Manufactured with rust-free, high-tech engineered polymer and stainless steel components, our gate locks, latches and hinges have a limited lifetime warranty. The hinges and latches can be adjusted after the gate is installed which eliminates costly gate repairs.



Our optional aluminum gate post inserts add extra strength and stability to your gate to ensure years of uninterrupted gate operation.



Picket Fencing

Our classic picket fences can dramatically change the look of your yard adding beauty and warmth to the landscape. From simple straight-top to decorative scalloped-top looks, you'll find a wide selection of styles to suit your tastes. And, our "neighbor-friendly" fences are designed to look the same on both sides. No matter which picket fencing style you select, you're assured years of durable performance and maintenance-free satisfaction. The bottom rail is reinforced with aluminum for added strength and durability.

A simple solution that adds ornamental style to your landscape.



The Plymouth™

Height: 3', 4' & 5'
Picket Style: 7/8" x 3"
Picket Caps: Dogear or Spade (3" picket spacing)
Bottom Rail: 1.5" x 5.5"
Color: White, Tan, Khaki



The Hampshire™

Height: 3', 4' & 5'
Picket Style: 7/8" x 3"
Picket Caps: Dogear or Spade (3" picket spacing)
Bottom Rail: 1.5" x 5.5"
Color: White, Tan, Khaki



The Chelsea™

Height: 3', 4' & 5'
Picket Style: 7/8" x 3"
Picket Caps: Dogear or Spade (3" picket spacing)
Bottom Rail: 1.75" x 3.5"
Color: White, Tan, Khaki



The Ellington™

Height: 3', 4' & 5'
Picket Style: 7/8" x 3"
Picket Caps: Dogear or Spade (3" picket spacing)
Bottom Rail: 1.75" x 3.5"
Color: White, Tan, Khaki



The Provincetown™

Height: 3', 4' & 5'
Picket Style: 7/8" x 3"
Picket Caps: Dogear or Spade (1.7" picket spacing)
Bottom Rail: 1.75" x 3.5"
Color: White, Tan, Khaki



The Richmond™

Height: 3', 4' & 5'
Picket Style: 7/8" x 3"
Picket Caps: Dogear or Spade (1.7" picket spacing)
Bottom Rail: 1.75" x 3.5"
Color: White, Tan, Khaki



The Sanibel™

Height: 3', 4' & 5'
Picket Style: 7/8" x 3"
Picket Caps: Dogear or Spade (3" picket spacing)
Bottom Rail: 1.75" x 3.5"
Color: White, Tan, Khaki

Picket Fencing continued on next page >>



The Abbington™

Height: 3', 4' & 5'
Picket Style: 7/8" x 1.5"
Picket Caps: Spade
 (3.7" picket spacing)
Bottom Rail: 1.75" x 3.5"
Color: White, Tan, Khaki



The Stratford™

Height: 3', 4' & 5'
Picket Style: 7/8" x 1.5"
Picket Caps: Spade
 (3.7" picket spacing)
Bottom Rail: 1.75" x 3.5"
Color: White, Tan, Khaki



The Hartford™

Height: 3', 4' & 5'
Picket Style: 7/8" x 1.5"
Picket Caps: Spade
 (1.7" picket spacing)
Bottom Rail: 1.75" x 3.5"
Color: White, Tan, Khaki



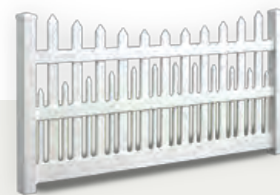
The Barrington™

Height: 3', 4' & 5'
Picket Style: 7/8" x 1.5"
Picket Caps: Spade
 (1.7" picket spacing)
Bottom Rail: 1.75" x 3.5"
Color: White, Tan, Khaki



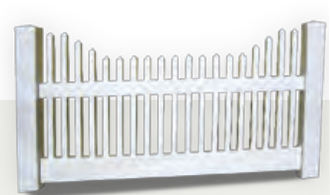
The Ashville™

Height: 4' & 5'
Picket Style: 7/8" x 3"
 & 7/8" x 1.5"
Picket Caps: Spade
 (1.7" picket spacing)
Bottom Rail: 1.75" x 3.5"
Color: White, Tan, Khaki



The Salem™

Height: 4' & 5'
Picket Style: 7/8" x 3"
 & 7/8" x 1.5"
Picket Caps: Spade
 (1.7" picket spacing)
Bottom Rail: 1.75" x 3.5"
Color: White, Tan, Khaki



The Classic™

Height: 3', 4' & 5'
Picket Style: 1.5" x 1.5"
Picket Caps: Spade
 (2" picket spacing)
Bottom Rail: 2" x 6"
Color: White, Tan

Vinyl Railing

The strongest, most durable railing systems on the market today.



The Berkshire™ Railing

Height: 36" & 42" (bottom rail 2" from the ground)

Rail: 2" x 3.5" top and bottom rail, aluminum insert in top rail

Width: 4', 6' & 8'

Spindle Style: 1.5" x 1.5" Spindle

Color: White, Tan, Khaki

IRC¹: 4', 6' & 8' - 36" & 42"

IBC²: 4', 6' & 8' - 36" & 42"



The Washington™ Railing

Height: 36" & 42" (bottom rail 2" from the ground)

Rail: T-Rail top rail & 2" x 3.5" bottom rail, aluminum insert in top rail

Width: 4', 6', 8' & 10'

Spindle Style: 1.5" x 1.5" Spindle

Color: White, Tan, Khaki

IRC¹: 4', 6', 8' & 10' - 36" & 42"

IBC²: 4', 6' & 8' - 36" & 42"



The Burlington™ Railing

Height: 36" & 42"
(bottom rail 2" from the ground)

Rail: 2" x 3.5" top and bottom rail, aluminum insert in top rail

Width: 4', 6' & 8'

Spindle Style: 1.5" x 1.5" Turned Spindle

Color: White, Tan

IRC¹: 4', 6' & 8' - 36" & 42"

IBC²: 4', 6' & 8' - 36" & 42"



The Addison™ Railing

Height: 36" & 42"
(bottom rail 2" from the ground)

Rail: T-Rail top rail & 2" x 3.5" bottom rail, aluminum insert in top rail

Width: 4', 6', 8' & 10'

Spindle Style: 1.5" x 1.5" Turned Spindle

Color: White, Tan

IRC¹: 4', 6', 8' & 10' - 36" & 42"

IBC²: 4', 6' & 8' - 36" & 42"

*1 - 2006 International Residential Code - Section R312.1

*2 - 2006 International Building Code - Section 1607.7.1

See Reports at www.p-e-i.com/reports - Please check local building codes for suitability on specific projects.

Railing Accessories

Brackets



2" x 3.5" Straight Set



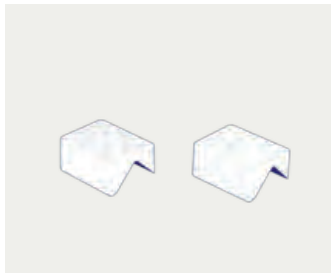
2" x 3.5" Stair Set



T-Rail and 2" x 3.5" Straight Set



T-Rail Stair Set



2" x 3.5" Adapter Pair - 45°



T-Rail Adapter Pair - 45°

Post Mount System



Post Mount

Wood Fasteners

Concrete Fasteners

Gate Kits Up to 60" wide



1.5" x 1.5" Spindles

Colonial Spindles

Structural Porch Post



4" x 4" x 108"
5" x 5" x 108"
Tested load
of 11,000 lb.

Foot Block



Post Skirt



Post Wrap



Posts



4" x 4" x 96"
4" x 4" x 120"
6" x 6" x 96"
6" x 6" x 120"

4" x 4" x 38"
4" x 4" x 44"

Outdoor Living Products

Live more. Stress less: Pergolas, gazebos and more.

All of our outdoor living products are designed and crafted to provide stylish, durable and maintenance-free performance that will enhance your outdoor living experience for years to come. Our pergolas/patio covers and gazebos are made from 100% virgin vinyl with the most advanced materials available for impact stabilization. They are impervious to water and humidity, and offer the industry's best UV protection. Virtually maintenance-free, our outdoor living products won't chip, rot or crack.



Pergolas/Patio Covers

Outdoor living with style and versatility.

Add style and function to your patio and yard with our wide array of handsome and durable freestanding and attached vinyl pergolas. The strongest in the industry, they have been exclusively engineered and manufactured for beauty, durability and performance. Our pergolas/patio covers can be installed to withstand winds of up to 140 mph and are certified to meet the Florida Building Code minimum design loads for buildings and other structures.



Gazebos

A fashionable and functional focal point.

Our vinyl gazebos offer a dramatic flourish to your outdoor landscape and complement your vision for outdoor living that expresses your lifestyle. The strongest in the industry, they have been exclusively engineered and manufactured for beauty, durability and performance. Our gazebos can be installed to withstand winds of up to 140 mph and are certified to meet the Florida Building Code minimum design loads for buildings and other structures.

Post Caps

Enhance your look with architectural detailing and lighting.



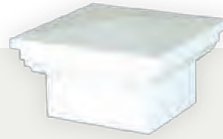
Gothic

Size: 3.5" x 3.5",
4" x 4" & 5" x 5"



Ball

Size: 4" x 4" & 5" x 5"



New England

Size: 4" x 4" & 5" x 5"



Federation

Size: 4" x 4", 5" x 5"
& 6" x 6"



External

Size: 4" x 4", 5" x 5"
& 6" x 6"



Horse Head

Size: 5" x 5"



Coachman

Size: 5" x 5"



Low Voltage

Size: 4" x 4"



Low Voltage

Size: 5" x 5"



Solar

Size: 4" x 4"



Solar

Size: 5" x 5"



Galaxy

Size: 3.5" x 3.5"
& 4" x 4"



Galaxy

Size: 5" x 5"



Classy

Size: 3.5" x 3.5",
4" x 4" & 5" x 5"
(w/adapter)



Prestige

Size: 4" x 4" & 5" x 5"



Cambridge

Size: 4" x 4" & 5" x 5"



Majestic

Size: 5" x 5"



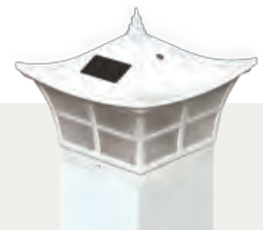
Regal

Size: 4" x 4"



Solar Wedge

Size: 1.875" x 4.5"



Ambience Solar

Size: 4" x 4" & 5" x 5"



weatherables

by USA Vinyl



©2013 USAVinyl, LLC. Purchaser has the sole responsibility to determine whether USAVinyl, LLC's products comply with applicable codes and is appropriate for the intended use. The purchaser and installer should review the intended use of the products with a licensed professional engineer to determine code compliance and the intended use.